



**OB/GYN Specialists
at Franklin**



DIRECTIONS

Welcome! We look forward to seeing you soon.

From Asheville/I-40 E:

Take exit 27 for US-74 W/US-23 toward US-19/
Clyde

Merge onto US-74 W/Great Smoky Mountains
Expressway for approximately 25 miles.

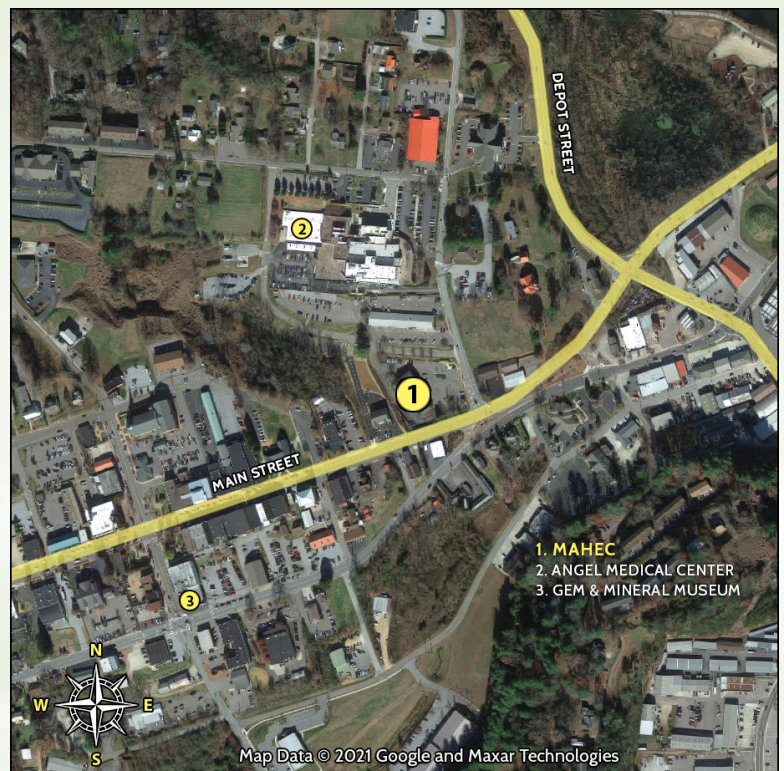
Take exit 81 for US-23 S toward US-441 S/
Dillsboro/Franklin/Atlanta

After approximately 18 miles, turn right onto
Hunnicut Ln/E Main St/U.S. 441 Bus.

Turn right onto Riverview St.

Turn left onto Medical Park Dr.

Office driveway will be on your left.



MAHEC Ob/Gyn Specialists at Franklin
56 Medical Park Drive
Franklin, NC 28734

Phone: 828-634-4565 | Fax: 828-407-2593 | Referral Fax: 828-771-5481